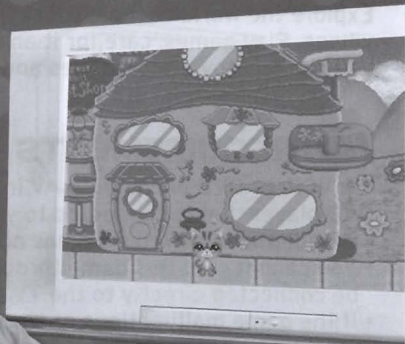


Littlest Pet Shop™

AGES 6+

BIGGEST ADVENTURE



Contents: Game Controller, Pet Owl.

Explore the world of the Littlest Pets! Adopt a pet and take it out to play in the village. Play games, care for it and keep it happy. Earn kibble along the way and you can buy toys, accessories and even adopt more pets.

REQUIREMENTS

TV, VCR, or DVD player with AV input. Or you may use the AV input on a VCR or DVD player that is connected to your TV.

- RF adapter required if TV has no AV input.
- You cannot play this game through a cable box or satellite hookup. Game must be connected directly to the TV, VCR or DVD player.
- If the game malfunctions or "locks up," you can RESET the unit by sliding the ON/OFF switch to OFF, and then back to the ON position.

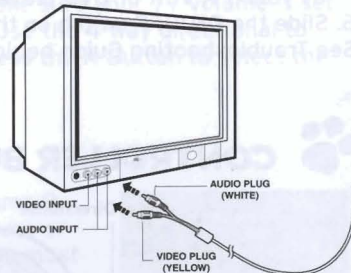
BATTERIES

See the back of this booklet for battery installation and warning information.

SETUP

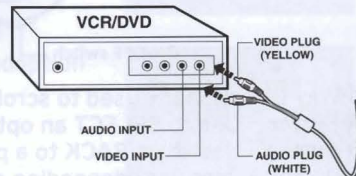
Connecting to a TV:

1. Insert the game unit's white plug into the white audio-in jack on the TV.
2. Insert the game unit's yellow plug into the yellow video-in jack on the TV.
Note: These jacks are normally found on the front of the TV near the adjustment controls, or on the back of the TV near the antenna and cable connections.
3. Turn on your TV and set it to the channel / video input mode directed by your TV owner's manual.



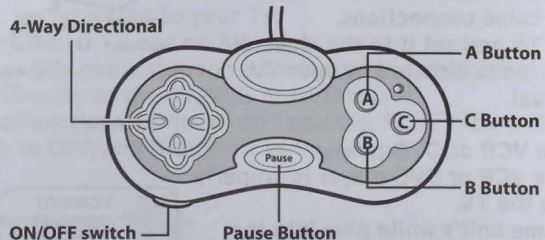
Connecting to a VCR or DVD player:

1. Make sure the VCR or DVD player is properly connected to the TV.
2. Insert the game unit's white plug into the white audio-in jack on the VCR or DVD player.
3. Insert the game unit's yellow plug into the yellow video-in jack on the VCR or DVD player.



4. Turn on your TV and VCR or DVD player.
 5. Set your TV, VCR or DVD player to the channel / video input mode directed by your TV, VCR or DVD player owner's manual.
 6. Slide the ON/OFF switch on the game unit to ON.
- See Troubleshooting Guide beginning on page 14 if necessary.

CONTROLLER BUTTONS AND FEATURES



- 4-Way Directional - Used to scroll through choices.
- A Button - Use to SELECT an option.
- B Button - Use to go BACK to a previous screen.
- C Button - Uses vary depending on the game.
- Pause Button - Pauses the game.
- ON/OFF switch - Turns the game on and off.

HOW TO PLAY

Press the A Button on the controller to begin. Make sure your TV volume is set to a level where you can hear the game sounds. Use the 4-way directional to move between selections on the screen. Then press the A Button to select the highlighted choice.

MAIN MENU

The Main Menu shows three options: Game A, Game B and Options. Choose to play an existing saved game or start a new one. If you have two games saved, you must delete one in order to get a new game. You can delete a saved game through the Options menu.



START A NEW GAME

If you start a new game, you go straight to the adoption center to choose your pet.



RESTART A SAVED GAME

If you choose to go to a saved game you are taken to that game's Pet Shop and your last selected pet will be waiting for you in the playpen.

There are two available save slots so that 2 players can keep their own separate Pet Shops on the same controller. All of the kibble you earn as well as toys and accessories you've bought don't show up in the other player's saved game. High scores however, are the same across all saved games. (Games save automatically after any changes occur, for example: adopt a pet, buy an accessory, etc.)

OPTIONS MENU

SFX: Adjust the volume of all of the sounds or mute them altogether.

Music: Adjust the volume of all background music or mute them altogether.

Delete Game: Delete a saved game.



INTRODUCTION

It's a beautiful day to explore the world of the Littlest Pets. Adopt your pets and then give them lots of love and attention to keep them happy. Wander around The Village exploring the different locations as you go. When you are done, save your game and pick it up tomorrow right where you left off.



PAUSING THE GAME

You can only pause while in a game at the Whirl-Around Playground. To pause a game, press the Pause Button on the controller. To resume play, select Continue, or select Quit if you would like to stop the game.

KIBBLE

Earn kibble by playing games at the Whirl-Around Playground. Use your kibble to buy accessories, pamper you pets, take care of sick pets and adopt more pets.



PETS

You can adopt up to 15 pets. Some are more rare than others and may cost more. Once you adopt a pet you get to name it and dress it in any accessories you may have bought so far. After that you must take care of it. The icons on the screen show how your pets are doing.

Health: If your pet gets sick it won't feel much like playing or getting pampered. If you have a sick pet, you must take it to the Get Better Center for it to get well.

Happiness: Pets that aren't taken out can become sad. If this happens, you will need to give the unhappy pet lots of attention. Plenty of playtime and lots of food should help and maybe even a trip to the salon for a little pampering.

Hunger: Pets can't play forever! Eventually your pet will get hungry. When your pet gets hungry take it to the Doggie Diner and make it something to eat.

Adopt



Happiness

Health



Hunger

TOWN MAP SCREEN



Littlest Pet Shop



Doggie Diner



Get Better Center



Whirl-Around
Playground



Purr-fection Salon

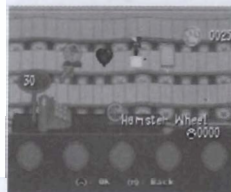


Little Lovin' Pet
Playhouse

LITTLEST PET SHOP

This is where all of the pets stay and it is here that you begin your adventure. From here you can go to the Toy Store, review the pet list, look through your photo album, bring your pet to the playpen and go outside to the village.

Toy Store: Buy toys for your pet to play with in the playpen. When you buy toys they are put in the proper area in the playpen. NOTE: When you go to the store, scroll over the items to see the cost for each. Also the amount of kibble you have accumulated so far will also show.



Pet List: This is where your pets stay when you are not playing with them. Scroll around and visit them in their cubbies. When you select a pet you'll see all of their information. From here you can choose if you want to play with that pet.

Photo Album: Look at all of the pictures you've taken so far. Your album can hold up to 10 pictures.

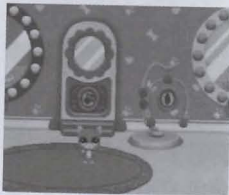
Playpen: This is the play area in the Pet Shop where your pets can play with their toys or take a rest when they get tired.

Outside: Take your pets outside and explore the rest of the village. Use the 4-WAY DIRECTIONAL to walk along the sidewalk to the other locations.

THE VILLAGE

Walk around the village and visit the different locations. Other pets are out and about as well so say "Hi" as you pass them.

Pet List



Playpen

Photo Album



Outside



WHIRL-AROUND PLAYGROUND

Take your pets here to play games. Depending on the pet you have out, there will be different games available. Use the 4-Way Directional to scroll through the game options at the bottom of the screen. Read the game descriptions to decide which games you want to play. The "How To" gives you the rules for each game.



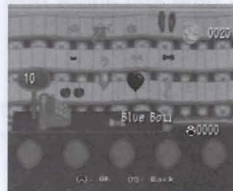
Some activities may require special circumstances to unlock and will appear grayed out. Instead of a description, an explanation of what you need to do to unlock the game is shown when it is selected.



PURR-FECTION SALON

Come on in and try on accessories, buy accessories, clean your pet, get your pet a haircut, take pictures and view your photo album.

Try on and buy accessories: Time to go shopping! Scroll through the available accessories. If you have enough kibble you can buy an accessory and try it on your pet. Once you dress your pet, the only way to change its accessories is to take it back to the salon and choose new ones.

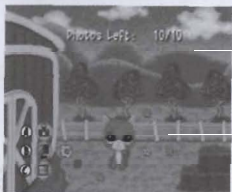


Clean your pet: Help clean your pet with four mini-games.

Haircut: After your pet is squeaky clean you can choose a new haircut for it. Getting a new haircut does require kibble.



Take a picture: You have several backdrops to choose from. Scroll through until you find one you like, then press the A Button to take a picture. The picture automatically goes into your album.



LITTLE LOVIN' PET PLAYHOUSE

Come and adopt new pets or give your current pets away to good homes.

Adopt a pet: Look at the 5 new pets at the adoption center. These pets change each day. When you move the selection arrow over a pet the price for that pet will show. You must have enough kibble to adopt the pet you choose.



Give your pet away to a good home: If you choose to give a pet away, it will be given to a close friend so don't worry. It is being taken care of. Once you give the pet away, however, you cannot get it back unless you want to wait for it to show back up for adoption. Then you can re-adopt it.



DOGGIE DINER

Bring your pet here to make it something to eat. Press the C Button to look through the recipes. Scroll through the ingredients on the left and choose which three ingredients you want to mix in the bowl. But watch out if you make SLOP, your pet won't eat it.



GET BETTER CENTER

When your pet gets sick, bring it here to help it feel better again. If your pet isn't sick you can still visit the Get Better Center for a check up. Both will cost you kibble but remember... you have to take care of your pets.





ENDING THE GAME



This game is all about exploring and caring for your pets. You can choose to leave the world of the Littlest Pets whenever you'd like. All of your pets will be in their cubbies or in the Playpen waiting for you to come play with them again.

Note: The game turns off automatically after 7 minutes of non-use. After automatic shutoff, the game unit will need to be turned off and back on again to continue play.



TROUBLESHOOTING



If you do not see the legal screens and then the main title screen after turning the TV and game unit on:

Check Plugs and Jacks - Make sure that the video and audio plugs are inserted into the correct jacks on your TV, VCR or DVD player.

Check Batteries - Make sure the batteries in the game unit are fresh and properly installed.

Check TV Channel - Your TV channel should be set to its auxiliary "gaming" channel. This is usually indicated as "AUX," "AV" or "Video." You may have to refer to your TV owner's manual to determine this. To locate your auxiliary channel (usually one of the following channels: 2, 1, 0, 00, or 99), click down

from channel 3 until "Line 1," "Line 2," "Video 1," "Video 2," "Front," "AUX," "AV" etc. appears on the screen. Then move the ON/OFF switch on the game unit to ON. If you are on the right channel, the game should come on. If this does not work, see if your TV remote has a button (labeled "Input," "AUX," "AV," "Line," "TV/Video," or "Video") that takes you to the correct channel. If your remote has one of these buttons, turn your TV to Channel 3 and then hit that button. Then move the ON/OFF switch on the game unit to ON. The game should come on.

Check VCR / DVD Player Connection - Your VCR / DVD player should be set to "AUX," "AV" or "Video." You may have to refer to your VCR or DVD owner's manual to determine this.

No Picture - Try putting a videotape into your VCR, let it start to play, and then hit STOP. This may give you a blue screen background. Then click down to the auxiliary channel on your TV.

If you do not get a blue screen, see if your TV and/or VCR has a main menu with an option for a blue screen background. If you go into the main menu, you can usually change from "cable" to "video" and get a blue screen.

If you have an older TV, you may find a "hidden door" on the TV that has color, picture, horizontal, vertical and antenna/cable buttons. If your TV does have these, press the antenna/cable button to get a blue screen.



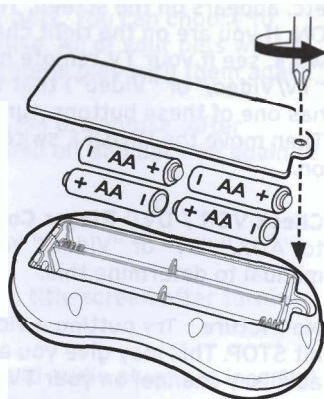
BATTERIES



X4 1.5VAA or LR6 size NOT INCLUDED **BATTERIES REQUIRED**

Alkaline batteries recommended. Phillips/cross head screwdriver (not included) needed to insert batteries.

Make sure the ON/OFF switch on the side of the electronic console is in the OFF position. Then loosen the screw on the battery compartment, located on the underside of the console, and remove the door. Insert 4 AA-size batteries (we recommend alkaline), making sure to align the + and - symbols with the markings in the plastic. Replace the door and tighten the screw.



CAUTION: TO AVOID BATTERY LEAKAGE

1. Be sure to insert the batteries correctly and always follow the game and battery manufacturers' instructions;
2. Do not mix old and new batteries or alkaline, standard (carbon-zinc) or rechargeable (nickel-cadmium) batteries;
3. Always remove weak or dead batteries from the product.

IMPORTANT: BATTERY INFORMATION

Please retain this information for future reference. Batteries should be replaced by an adult.

CAUTION:

1. Always follow the instructions carefully. Use only batteries specified and be sure to insert them correctly by matching the + and - polarity markings.
2. Do not mix old batteries and new batteries, or standard (carbon-zinc) with alkaline batteries.
3. Remove exhausted or dead batteries from the product.
4. Remove batteries if product is not to be played with for a long time.
5. Do not short-circuit the supply terminals.

6. Should this product cause, or be affected by, local electrical interference, move it away from other electrical equipment. Reset (switch off and back on again or removing and re-inserting batteries) if necessary.
7. **RECHARGEABLE BATTERIES:** Do not mix these with any other types of battery. Always remove from the product before recharging. Recharge batteries under adult supervision. **DO NOT RECHARGE OTHER TYPES OF BATTERY.**



This device complies with Part 15 of the FCC Rules.
Operation is subject to the following two conditions:

1. this device may not cause harmful interference, and
2. this device must accept any interference received, including interference that may cause undesired operation.

Warning: Changes or modifications not approved by the party responsible for compliance could void the user's authority to operate the equipment.

NOTE: This equipment has been tested and found to comply with the limits for a Class B digital device, pursuant to part 15 of the FCC Rules. These limits are designed to provide reasonable protection against harmful interference

in a residential installation. This equipment generates, uses, and can radiate radio frequency energy, and, if not installed and used in accordance with the instructions, may cause harmful interference to radio communications. However, there is no guarantee that interference will not occur in a particular installation. If this equipment does cause harmful interference to radio or television reception, which can be determined by turning the equipment off and on, the user is encouraged to try to correct the interference by one or more of the following measures:

- Reorient or relocate the receiving antenna.
- Increase the separation between the equipment and receiver.
- Consult the dealer or an experienced radio/TV technician for help.
- Shielded cables must be used with this unit to ensure compliance with the class B FCC limits.

We will be happy to hear your questions or comments about this game. US consumers please write to: Hasbro Games, Consumer Affairs Dept., P.O. Box 200, Pawtucket, RI 02862. Tel: 888-836-7025 (toll free). Canadian consumers please write to: Hasbro Canada Corporation, 2350 de la Province, Longueuil, QC Canada, J4G 1G2. European consumers please write to: Hasbro UK Ltd., Hasbro Consumer Affairs, P.O. BOX 43, Caswell Way, Newport, Wales, NP194YD, or telephone our Helpline on 00 800 2242 7276.



The HASBRO name and logo and THE LITTLEST PET SHOP
are ® & © 2007 Hasbro, Pawtucket, RI 02862.
All Rights Reserved. TM & © denote U.S. Trademarks.

0207**44005**000



PROOF OF PURCHASE

44005

LITTLEST PET SHOP™
BIGGEST ADVENTURE GAME